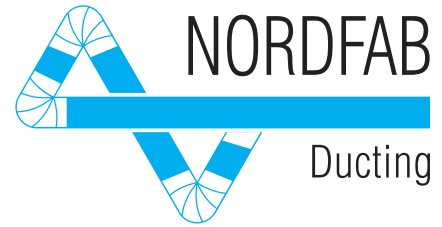


Nordfab In-line Spark Trap



Complementary Fire Prevention for your Dust Collection System

Simple, Economical Fire Protection

Installed in ducting as part of a dust collection system, the Nordfab In-line Spark Trap greatly reduces the possibility of fire in cyclones / collectors by decreasing the number of sparks which could reach the cyclone or collector through the ductwork.

The spark trap's effectiveness is based on a simple principle — disrupting the laminar airflow to cause sparks to cool and extinguish before they can enter a cyclone / collector. There are no moving parts and no power is required for operation. Pressure loss is minimal.*

Quick, Easy Installation and Cleanout

Quick-Fit clamp-together ducting eliminates rivets, screws, and welding, significantly reducing the time required to install or replace ducting. The Nordfab In-line Spark Trap can quickly and easily be mounted into Quick-Fit ducting systems, or other duct systems via flanged ends or with use of a Nordfab adapter, and The trap can easily be removed for cleanout. Calibration or other assistance from a factory technician is not required.

*The unit does not create a secondary dust collection point.

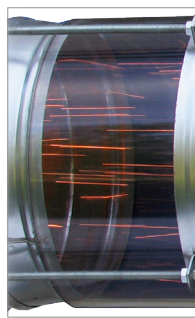
Contact Nordfab to find your local ducting expert:
info@nordfab.com
Phone: 800-532-0830

www.nordfab-us.com

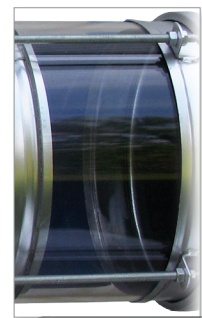


↑ sparks visible in airstream entering trap (closeup below)

↑ airstream exiting trap (closeup below)



Nordfab In-line Spark Trap (shown with viewing spools on either side)



The Nordfab In-line Spark Trap is available with Quick-Fit ends or flanged ends.

NOTE: The Nordfab In-line Spark Trap is not a replacement for spark detection or explosion isolation systems. Complementary device only.

The world's fastest ducting™

Nordfab In-line Spark Trap



QF ends allow quick and easy mounting into Quick-Fit ducting systems.

| Ø in. | QF ends Part no. | Height in. | Width in. | Weight lb. | Galv. Price \$ | SS Price \$ |
|-------|------------------|------------|-----------|------------|----------------|-------------|
| 4 | 3255-0400-X00000 | 7 | 18 | 6 | 335.50 | 1156.70 |
| 5 | 3255-0500-X00000 | 9 | 20 | 7 | 394.00 | 1283.00 |
| 6 | 3255-0600-X00000 | 10 | 20 | 8 | 482.50 | 1474.20 |
| 7 | 3255-0700-X00000 | 12 | 22 | 11 | 566.50 | 1655.60 |
| 8 | 3255-0800-X00000 | 13 | 22 | 13 | 643.00 | 1820.90 |
| 9 | 3255-0900-X00000 | 15 | 24 | 15 | 680.50 | 1901.90 |
| 10 | 3255-1000-X00000 | 16 | 24 | 16 | 727.00 | 2002.30 |
| 12 | 3255-1200-X00000 | 18 | 26 | 21 | 776.50 | 2109.20 |
| 14 | 3255-1400-X00000 | 22 | 28 | 26 | 948.30 | 2480.20 |



Flanged ends will be Nordfab's Angle Flanges unless a custom hole pattern or a flange with no holes are specified.

| Ø in. | Flanged ends Part no. | Height in. | Width in. | Weight lb. | Galv. \$ | SS Price \$ |
|-------|-----------------------|------------|-----------|------------|----------|-------------|
| 4 | 3255-0400-X000AF | 7 | 18 | 6 | 352.70 | 1235.70 |
| 5 | 3255-0500-X000AF | 9 | 20 | 7 | 412.80 | 1367.00 |
| 6 | 3255-0600-X000AF | 10 | 20 | 8 | 506.10 | 1562.40 |
| 7 | 3255-0700-X000AF | 12 | 22 | 11 | 591.70 | 1750.20 |
| 8 | 3255-0800-X000AF | 13 | 22 | 13 | 674.20 | 1918.50 |
| 9 | 3255-0900-X000AF | 15 | 24 | 15 | 715.30 | 1999.70 |
| 10 | 3255-1000-X000AF | 16 | 24 | 16 | 768.40 | 2102.70 |
| 12 | 3255-1200-X000AF | 18 | 26 | 21 | 830.70 | 2214.60 |
| 14 | 3255-1400-X000AF | 22 | 28 | 26 | 1015.50 | 2591.20 |

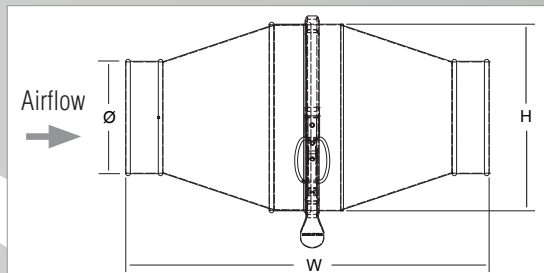
X in part number: Galvanized Steel = 1 and Stainless Steel = 2

Duct distance recommended:

At least ten diameters from cyclone / collector

Velocity:

1500 - 5000 fpm
(7.62m/sec - 25.4m/sec)



Nordfab's In-line Spark Trap must be mounted in a horizontal position.

Contact Nordfab to find your local ducting expert:

info@nordfab.com

Phone: 800-532-0830

www.nordfab-us.com

The Nordfab In-line Spark Trap is a simple, low-cost tool that can reduce incidents of fire events, reducing costs and disruption and improving safety. System redundancy and complementary measures should be applied.